

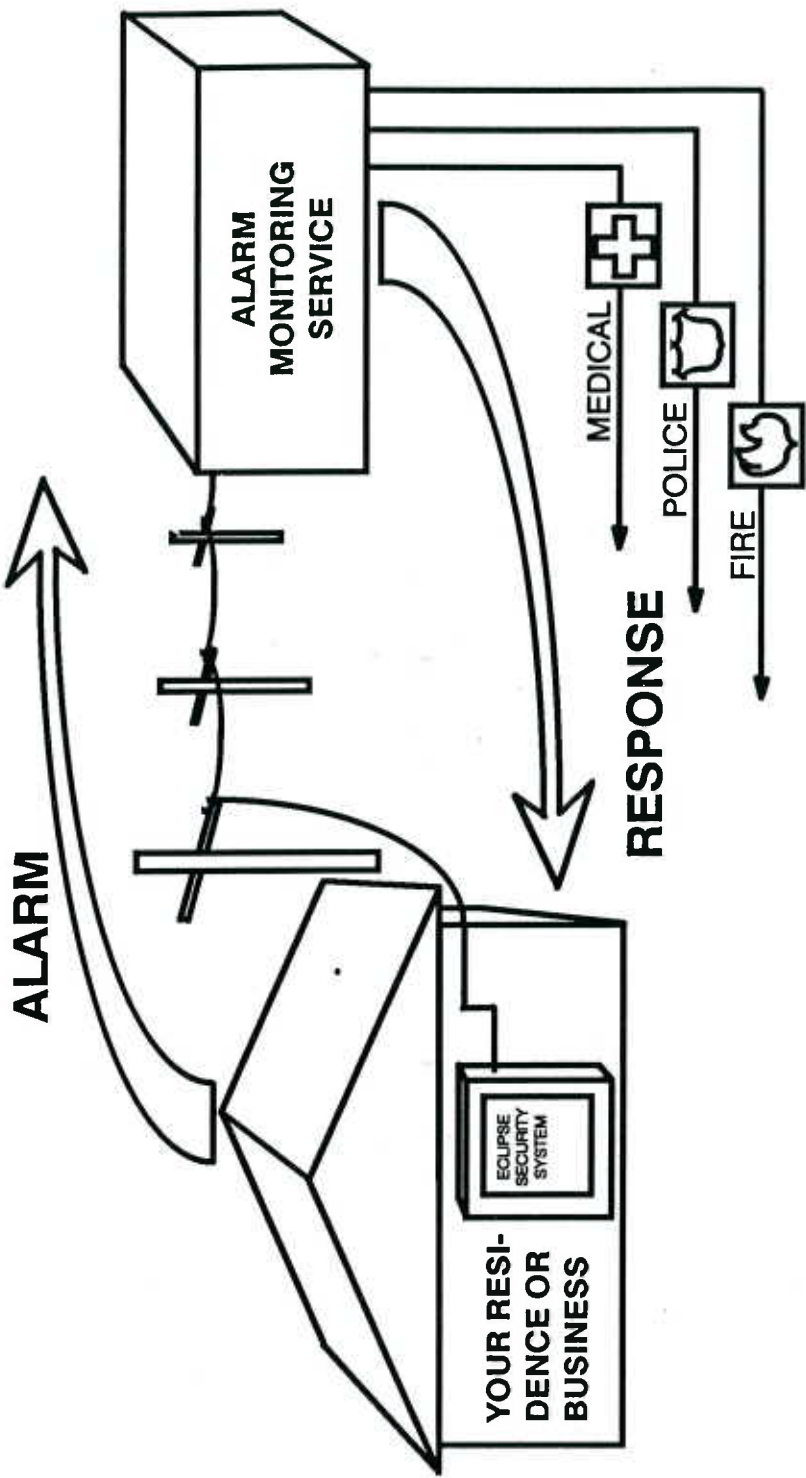
# ECLIPSE

---

## 3.6 *Control/Communicator*

# ***Using Your Alarm System***

**ALARM**



**ALARM  
MONITORING  
SERVICE**

**YOUR RESI-  
DENCE OR  
BUSINESS**

**ECLIPSE  
SECURITY  
SYSTEM**

**MEDICAL**

**POLICE**

**FIRE**

**RESPONSE**

## CONGRATULATIONS

Thank you for purchasing the C&K ECLIPSE 2.1 Alarm System. This system has been designed to provide you with many years of reliable operation. It is one of the most advanced and easy-to-use controls available today.

## OPERATION

This booklet will explain the various features that are incorporated in your ECLIPSE 2.1. Our installer has filled in the blanks and checked the boxes showing the features of your installation.

The next two pages are the ones you will use most often - until operation of the system becomes automatic to you.

---

## HELP

If you need help operating or understanding your system, please call us at

---

If you want to test your system, call our Central Station at

---

## CONTENTS

Arming the System	Page 2
Disarming the System	Page 2
Resetting the Alarm	Page 3
Instant Arming the System	Page 4
Options	Pages 5-7
Reading the Lights	Page 8
Testing Your System	Page 9
Phone Trouble	Page 9
Smoke Detector Placement	Page 10
Emergency Evacuation	Page 11
Terms we use	Page 12
Warranty	Page 13

## **TURNING ON THE ALARM SYSTEM ("ARMING")**

### **1. Be sure the GREEN *Ready* LIGHT is ON.**

- \* If it is not on, the RED *Zone* LIGHTS will indicate which zones are violated (door open, someone moving in the presence of a motion detector, etc.)
- \* The Zone Lights go off automatically after 5 minutes as a security measure. To turn them on again, press any key.
- \* All zones must be normal (or bypassed) before you can arm the system

### **2. ENTER your 4-digit COMBINATION.**

- \* Do not pause more than a second or two between digits or the Control will reject the combination.
- \* If you make a mistake, wait three seconds and start over.

### **3. CHECK that the RED *Armed* LIGHT has come ON.**

- \* The keypad will beep twice as an additional indication that the system is armed.

### **4. EXIT through any TIME DELAY DOOR within \_\_\_\_\_ seconds.**

- \* Doors in the zones checked below are Time Delay Doors.
- \* If you have the Automatic Home option, you may remain in the building after arming. (See page 6.)

## **TURNING OFF THE ALARM SYSTEM ("DISARMING")**

### **1. ENTER ONLY THROUGH A TIME DELAY DOOR.**

- \* The Keypad will  will not  beep every second to remind you to disarm the system.

### **2. WITHIN \_\_\_\_\_ SECONDS, ENTER your 4-digit COMBINATION.**

### **3. CHECK that the RED *Armed* LIGHT goes OFF.**

- \* If the Red Armed Light does not go off, wait three seconds and re-enter your combination.

# do you work it?

AREAS PROTECTED

<input type="checkbox"/> AC POWER	<input type="checkbox"/> ZONE 1
<input type="checkbox"/> READY	<input type="checkbox"/> ZONE 2
<input type="checkbox"/> ARMED	<input type="checkbox"/> ZONE 3
<input type="checkbox"/> TROUBLE	<input type="checkbox"/> ZONE 4
<input type="checkbox"/> REPORT	<input type="checkbox"/> ZONE 5
<input type="checkbox"/> SERVICE	<input type="checkbox"/> ZONE 6
	<input type="checkbox"/> ZONE 7
	<input type="checkbox"/> ZONE 8
	<input type="checkbox"/> ZONE 9

KEYPAD LIGHTS

## RESETTING THE ALARM SYSTEM

*after an alarm.*

### 1. ENTER your 4-digit COMBINATION.

- \* This will silence the siren (bell) and disarm the system.
- \* The Red Zone light(s) and the Green Ready light will continue to flash to help you remember where the violation(s) occurred.
- \* Write down the numbers of the violated zones to help us service you.
- \* Press the 4 and 8 keys at the same time to clear these lights.

**there's more**

# more on how you work It

---

## ***REARMING THE SYSTEM after an Alarm.***

### **1. The GREEN *Ready* LIGHT must be ON**

\* If the Green *Ready* light is not on and a Red *Zone* light is on, it means that the violated zone has not been restored.

\* If you cannot restore the violated zone, you may be able to bypass the zone in order to arm the rest of the system. See Automatic Bypass and Manual Bypass on page 5.

## ***INSTANT ARMING THE SYSTEM***

If you are going to be home, you may wish to convert your "time delayed" zones to "instant" zones. This will prevent intruders from entering undetected during the normal "entry delay" period.

**CAUTION.** When you have armed it this way, you will not be able to enter or exit through any exterior door or walk through any protected areas without setting off the alarm. Also, if anyone with a key comes in while the entry delay is disabled, the alarm will be set off.

1. When arming the system, hold down the **last digit** of your combination for 3 seconds. This will cause the delayed zones to become instant zones.

\* The Red *Armed* light will flash to warn you that there are no delays.

2. When you leave, you must disarm, then arm the system again in order to turn on the "entry delay" for when you return.

# Options

Many of the features of the Eclipse 2.1 are optional. They are enabled only if appropriate for your installation. Regulations and system requirements may not allow some options. Your installer has checked those which are enabled in your system.

**Zone Chime.** The keypad beeps each time a designated zone is tripped. This can be used as a door annunciator. (You can turn off this feature by pressing "####". You can turn it back on the same way. The keypad will beep on the fourth "#".)

**Automatic Bypass.** Any zone checked below which is violated at the time of arming will be automatically disabled. The Red *Zone* and Green *Ready* lights will continue to flash to remind you that although the system is armed, no protection is being afforded in the disabled zone(s).

ZONE

1

**Manual Bypass.** Any zone checked at the left which is violated at the time of arming can be disabled using the following procedure:

2

3

1. Enter "#", your combination\*, then the zone number. The Red *Zone* and Green *Ready* lights will continue to flash to remind you that although the system is armed, no protection is being afforded in the disabled zone.

4

5

2. Repeat this process for each zone that you wish to bypass.

6

3. When bypassing is complete, arm the system by entering your combination.

7

4. You may **remove a bypass** by entering "#", your combination\*, then the zone number. All bypasses are automatically removed when the system is disarmed.

8

9

\*User combinations, when they are created, may or may not be given the ability to do Manual Bypass. The combination you use must have that ability in order to use the above procedure.



# more Options

**Automatic Home.** The system will automatically determine whether you are at home or away.

If you arm the system, but do not exit the premises through a time-delay door during the "exit" period, the control will **automatically bypass all interior zones**. This allows you free movement within the premises. Authorized persons entering through a time-delay door will have 20 seconds to disarm the system.

Rearming and leaving through a delay door will restore interior protection.

You can automatically bypass all interior zones and change entry/exit delays to "instant". When you arm your system, hold the last digit of your combination down for 3 seconds. Do not exit the premises. To allow authorized people to enter or leave the premises, you must first disarm the system. Rearming and exiting through a "delay" door will restore the delays and interior protection.

**Duress Code.** A special 4-digit code can be used to arm or disarm your system when an intruder forces you to turn the system on or off while he is watching. Using this code will cause normal arming and disarming indications, but will also send a special signal to our monitoring station. The Duress Code is listed on the card with the other user combinations.

**Panic Button.** Pressing the "\*" and "#" keys at the same time will cause an audible \_\_\_ silent \_\_\_ alarm. The Green *Ready* light and the Red *Zone 9* light will \_\_\_ will not \_\_\_ flash when these two keys are pressed. A report will \_\_\_ will not \_\_\_ be sent to the central station. This feature is active whether armed or disarmed.

**Audibles.** The audible device(s) connected to your system will sound for \_\_\_ minutes when the system is tripped unless you silence it by entering your combination. The devices will make the following sounds:

Fire \_\_\_\_\_ tone

Panic \_\_\_\_\_ tone

Burglary \_\_\_\_\_ tone

Other \_\_\_\_\_ tone





**Smoke Detectors** will cause the "Fire" sound to occur. A *Red Zone* light will indicate which one has tripped.

**To reset:**

1. Enter your regular combination to silence the audible device(s).

2. Enter the code  to reset the detector.

OR

2. Push the Fire RESET button to reset the sensors.

3. Press "4" and "8" at the same time to clear the keyboard lights.



**24-Hour Monitoring.** Your system will transmit alarm signals to our Central Station. Transmission will occur Immediately or after a \_\_\_ second delay. If your system is set for a delay, you may prevent any transmission from being sent by disarming the system before the delay expires.



**Standby Battery.** During power failures your system will switch to its standby battery. The Green AC light will go out whenever the system is running on the battery.

If the outage lasts more than 15 minutes, the Yellow *Service* light will come on and the Green *Ready* light will flash to let you know about the extended power failure in case you need to check such devices as freezers for damage. To turn these lights off, press the "4" and "8" keys at the same time.

The battery should be replaced every 3 to 5 years. Replace with C&K Model 1265, a 12 volt, 6.5 ampere-hour battery.



**Daily Battery Check.** Your system will automatically test its battery once each day. During this test the Green AC light will be off. At the end of the 5-minute test, all lights will return to normal. If the test fails, the Yellow *Service* light will be on, indicating that service is required.



**Siren/Bell Test.** Pressing "2" and "9" at the same time will test the sirens or bells. Release the keys to stop the test. No signal will be sent to our Central Station during the test.

# reading the Lights

**ZONE 1 - 9**

**OFF** - Normal state. Zone not violated.

**ON** - Zone violated while system is disarmed.

**FLASHING SLOW** - Alarm Condition or Alarm Memory. Disarm to stop audible alarm. Press 4 and 8 to clear Alarm Memory.

**FLASHING FAST** - Zone is temporarily bypassed. To remove bypass, repeat bypass procedure or disarm system.

**AC POWER**

**ON** - AC power supplied, battery charger working.

**OFF** - Power interruption or daily battery test going on.

**READY**

**ON** - System normal and ready to be armed.

**OFF** - Zone in violation.

**FLASHING** - Ready to be armed, but a warning condition exists, such as AC power loss, service required or zone(s) bypassed. Press any key to reactivate the Zone Lights.

**ARMED**

**ON** - System armed

**OFF** - System not armed.

**FLASHING** - System armed with Delay Zones converted to Instant Zones.

**TROUBLE**

**OFF** - No trouble detected.

**ON** - Trouble (bad connection, short, etc.) in the wiring from detection devices. Call us for service.

**FLASHING FAST** - A supervised circuit is bypassed.

**FLASHING SLOW** - An alarm from a supervised zone has been acknowledged, but the condition still exists.

**REPORT**

**OFF** - Normal State

**ON** - The control unit is communicating with the central station.

**FLASHING** - The control unit has failed to communicate with the central station after repeated attempts. Press 4 and 8 to clear. Call us for service.

**SERVICE**

**OFF** - Normal state.

**ON** - Service is required. Low battery, battery test failure, blown fuses, AC power loss longer than 15 minutes. (Call us for service. Press 4 and 8 to clear if trouble condition is corrected.)

**FLASHING** - On start-up, self-test failure. Press 4 and 8. If the light does not clear, call us for service.

## ***Test your system every week***

Test your siren or bell. Press "2" and "9" at the same time. The siren or bell should sound as long as you hold the two keys down. No signal will be sent to the Central Station during this test.

Call our central station at \_\_\_\_\_  
It is best to schedule system tests for a weekend. When calling, you must properly identify yourself. Then trip the alarm system by any method you choose (pressing the panic button, \* and #, is simplest). The yellow *report* light will come on briefly when your alarm system is talking to our monitoring station computer. Wait one minute after the light goes off, then call the central station to confirm a successful test and let them know you are through testing.

## ***If you have telephone trouble:***

First, unplug the alarm system from its telephone jack to determine if the trouble is being caused by the alarm system. The jack is located \_\_\_\_\_

If the trouble goes away when you unplug the alarm, call us for service. If not, call the telephone company.

***Always test your system after the telephone repair person has finished to be sure they have not disconnected your alarm system from the telephone network.***

---

### TELEPHONE LINE PROBLEMS

In the event of telephone operational problems, disconnect the control/communicator by removing the plug from the telecom socket. We recommend that your certified installer demonstrates disconnecting the phones on installation of the system. Do not disconnect the phone connection inside the control/communicator. Doing so will result in the loss of your phone lines. If your regular phone works correctly after the control/communicator has been disconnected from the phone lines, the control/communicator has a problem and should be returned for repair.

If, upon disconnection of the control/communicator, there is still a problem on your line, notify the telephone company that they have a problem and request prompt repair service. The user may not under any circumstances (in or out of warranty) attempt any service or repairs on the system. It must be returned to the factory or an authorized service agency for all repairs.

### TO THE INSTALLER

Regular maintenance and inspection (at least annually) by the installer and frequent testing by the user are vital to continuous satisfactory operation of any alarm system.

The installer should assume the responsibility for developing and offering a regular maintenance program to the user as well as acquainting the user with the proper operation and limitations of the alarm system and its component parts. Recommendations must be included for a specific program of frequent testing (at least weekly) to insure the systems's proper operation at all times.

# Smoke Detector Placement

We subscribe to the recommendations for the number and placement of smoke and/or heat detectors found in the National Fire Protection Association's Standard #74, shown below.

For the best early warning, fire detection devices should be installed in all rooms and areas of the house. A smoke detector should be installed in each separate sleeping area, (in the vicinity of, but outside of the bedrooms), and heat or smoke detectors in living rooms, dining rooms, bedrooms, kitchens, hallways, attics, furnace rooms, closets, utility and storage rooms, basements, and attached garages.

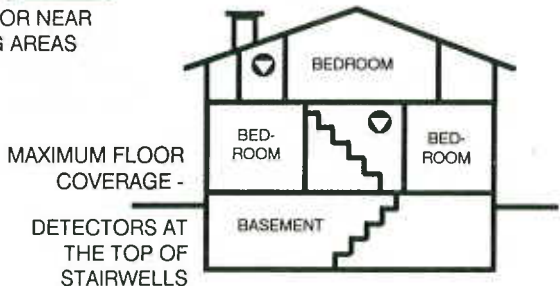
Note: "Approval of the control's burglar alarm functions does not fall within the (California) State Fire Marshal's area of jurisdiction.



BEST RESIDENTIAL DETECTOR PLACEMENT BETWEEN BEDROOMS AND THE REST OF THE HOUSE



 = LOCATION FOR SMOKE DETECTOR



# Emergency Evacuation

Every household should establish and regularly practice an escape plan in the event of fire. The following steps, recommended by the National Fire Protection Association, can be used as a guide in developing your own emergency plan.

Plan on your detector or your alarm system sounders waking all occupants.

Determine two means of escape from each room, especially the bedrooms, since most fires occur at night when everyone is asleep. One escape path should lead to a door that permits normal exit from the house. The other may be a window that opens easily to use if the primary path is unpassable. An escape ladder should be stationed at the window if it is too high off the ground to jump safely.

Sketch a floor plan, showing doors, windows, stairs, and rooftops that can be used for escape. Indicate escape routes for each room. (See examples below.) Post copies of the sketch in each room. Remember to keep these escape routes free from obstructions.

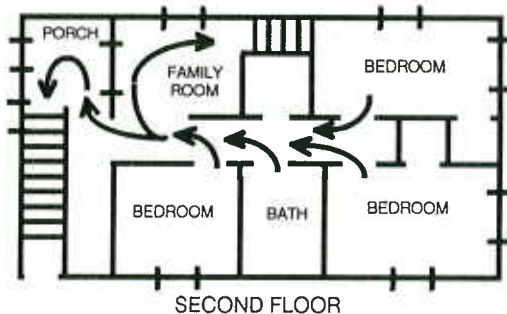
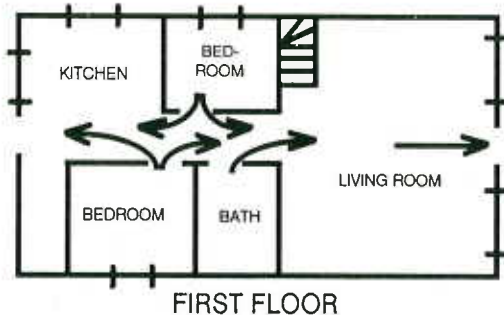
Keep all bedroom doors shut while the occupants are asleep. This will prevent deadly smoke from entering the rooms while you escape.

Establish a meeting place outdoors, away from the house, where everyone can gather and account for those missing. Choose someone to notify the authorities. Choose someone to assure that nobody returns to the house; many die going back.

**Escape quickly. Don't panic.**

**Before you open a door, check to see if it is hot. If it is hot, don't open it, but use an alternate escape route. Even if the door is cool, use your shoulder to open it cautiously. Be ready to slam it closed if smoke or heat rushes in.**

**When moving through a smoky area, stay as close to the floor as possible. Crawl and hold your breath.**



# Terms we use

---

**BYPASS** - To take a zone out of the circuit when it malfunctions so that the rest of the system can be armed. This might be caused by something like a window that won't close all the way or by a malfunctioning sensing device. A bypassed zone is not protected.

**CENTRAL STATION** - The office that your alarm system calls when there is an alarm. Signals are sent which contain information about the nature of the alarm condition. This allows the dispatcher on duty to know how best to respond.

**VIOLATION** - A zone is **violated** when any of its sensing devices is tripped. It could be an open door, an open window, someone moving about in the presence of a motion sensor, or something standing on a pressure pad. It could also be caused by the malfunctioning of one of these devices.

**ZONE** - One of the protected areas of your premises. Violations are reported to the central station by zone. Lights on the keypad indicate which zone(s) are violated.



## LIMITED WARRANTY

Seller warrants its products to be in conformance with its own plans and specifications and to be free from defects in materials and workmanship under normal use and service for 18 months from the date stamp control on the product or for products not having a C & K Systems date stamp, for 12 months from date of original purchase unless the installation instructions or catalog sets forth a shorter period, in which case the shorter period shall apply. Seller's obligation shall be limited to repairing or replacing, at its option, free of charge for materials or labor, any part which is proved not in compliance with Seller's specifications or proves defective in materials or workmanship under normal use and service. This warranty is void if the product is altered or improperly repaired or serviced by anyone other than C & K Systems factory service.

THERE ARE NO WARRANTIES, EXPRESS OR IMPLIED, OF MERCHANTABILITY, OR FITNESS FOR A PARTICULAR PURPOSE OR OTHERWISE, WHICH EXTEND BEYOND THE DESCRIPTION ON THE FACE HEREOF. In no case shall Seller be liable to anyone for any consequential or incidental damages for breach of this or any other warranty, express or implied, or upon any other basis of liability whatsoever, even if the loss or damage is caused by Seller's own negligence or fault.

Seller does not represent that its product may not be compromised or circumvented; that the product will prevent any personal injury or property loss by burglary, robbery, fire or otherwise; or that the product will in all cases provide adequate warning or protection. Buyer understands that a properly installed and maintained alarm may only reduce the risk of a burglary, robbery, or fire without warning, but it is not insurance or a guarantee that such will not occur or that there will be no personal injury or property loss as a result. CONSEQUENTLY, SELLER SHALL HAVE NO LIABILITY FOR ANY PERSONAL INJURY, PROPERTY DAMAGE, OR OTHER LOSS BASED ON A CLAIM THE PRODUCT FAILED TO GIVE WARNING. However, if Seller is held liable, whether directly or indirectly, for any loss or damage arising under this Limited Warranty or otherwise, regardless of cause or origin, Seller's maximum liability shall not in any case exceed the purchase price of the product, which shall be fixed as liquidated damages and not as a penalty, and shall be the complete and exclusive remedy against Seller.

This warranty replaces all previous warranties and is the only warranty made by C & K Systems on this product. No increase or alteration, written or verbal, of the obligation of this warranty is authorized.

---

## THE LIMITATIONS OF YOUR ALARM SYSTEM

While your system is an advanced design security system, it does not offer guaranteed protection against burglary or fire. Any alarm system, whether commercial or residential, is subject to compromise or failure-to-warn for a variety of reasons:

- \* Intruders may gain access through unprotected openings or have the technical sophistication to bypass an alarm sensor or disconnect an alarm warning device.
- \* Intrusion detectors (e.g. passive infrared detectors), smoke detectors, and many other sensing devices will not work without power. Devices powered by AC will not work if their AC power supply is off for any reason and their backup batteries are missing, dead, or not put in properly.
- \* Alarm warning devices such as sirens, bells or horns may not alert people or wake up sleepers if they are located on the other side of closed or partly closed doors. If warning devices are on a different level of the residence from the bedrooms, then they are less likely to waken or alert people inside bedrooms.
- \* Telephone lines needed to transmit alarm signals from a premise to a central monitoring station may be out of service or temporarily out of service. Telephone lines are also subject to compromise by sophisticated methods of attack.
- \* Smoke detectors used in conjunction with the system may not sense fires that start where smoke cannot reach the detectors, such as in chimneys, in walls, or roofs, or on the other side of closed doors. Smoke detectors also may not sense a fire on another level of the residence or building. A second floor detector, for example, may not sense a first floor or basement fire. Finally, smoke detectors have sensing limitations. No smoke detector can sense every kind of fire every time. In general, detectors may not always warn you about fires caused by carelessness and safety hazards, like smoking in bed, violent explosions, escaping gas, improper storage of flammable materials, overloaded electrical circuits, children playing with matches, or arson.

The most common cause of an alarm system not functioning properly when an intrusion or fire occurs is inadequate maintenance. Your alarm system should be tested weekly to make sure all sensors are working properly. The master console and remote keypad(s) should be tested as well.

Installing an alarm system may make you eligible for lower insurance rates, but an alarm system is not a substitute for insurance. Homeowners, property owners, and renters should continue to insure their lives and property





## Your operating Combinations are:

User Combination #2	___	___	___	___
User Combination #3	___	___	___	___
User Combination #4	___	___	___	___
User Combination #5	___	___	___	___
User Combination #6	___	___	___	___
Duress Code (#7)	___	___	___	___

(User Combination #1 is used as a service combination.)

Keep this card in a secure place, away from the arming station.

## Changing Your Combinations

You may change your User Combinations whenever necessary. You should follow the instructions below carefully to avoid unwanted changes to the Eclipse programming.

In addition to the 4-digit combination you assign, you must indicate the arming and bypassing privileges for each user.

**FOLLOW THESE STEPS** - All entries are made on the same keypad you use to arm and disarm your system.

1. Enter "\*"
2. Enter your Master Combination 
  - The Trouble, Report, and Service lights will start flashing - indicating that you now have access to the system memory.
  - If you make a mistake, just wait 3 seconds and start over again with step 1.
3. Enter "1"
4. Enter the User Number (2 through 7)
5. Enter the New Combination 
  - Use any four digits - repeating digits are OK.
  - DO NOT make a user combination the same as the first four digits of the master combination.
  - If you make a mistake, press "#". The keypad will begin to beep continuously. Start over at step 3.

*continued on reverse*

6. Enter an Arming Privilege number \_\_\_\_\_

- Enter "5" for Arm Only
- Enter "6" for Disarm Only
- Enter "7" for Arm & Disarm

7. Enter a Bypass Privilege number \_\_\_\_\_

- Enter "1" for Bypass ability
- Enter "2" for No Bypass ability
- If you make a mistake, press "#" and start over with step 3.

8. Enter "#" to complete the entry.

9. Repeat steps 3 through 8 if you want to change other combinations.

10. When changes are complete, enter "0 0 #" to return the system to normal operating mode. (If keypad beeps continuously, enter 00# again.)

11. Try your new combinations to verify that they work as you intend them to.

USE THESE CODES ONLY IF CHECKED HERE	<input type="checkbox"/>
---	--------------------------

Enter "1" for Arm Only with Report
Enter "2" for Disarm Only with Report
Enter "3" for Arm & Disarm with Report

EXAMPLE: Your Master Combination is 1 1 1 1 1 1. You want to add or change User Combination #3. You want this combination to be 1234. This combination is for the night janitor who arrives while you are still there. You do not want him to have access to the building after he has finished his work. You want him to be able to bypass any portion of the system. Make the following entries:

\* 111111 13 1234 5 2 # 00#

## **Automatic Light Control Systems For Home and Office:**

C&K Systems introduces "The Big Switch™" – a family of affordable, automatic light control systems for your home or office.

They are convenient. You simply walk to your front door and, without the slightest flick of a finger, your lights turn on instantly! You'll not only feel more at ease, you will have peace of mind knowing that no surprises lie ahead.

"The Big Switch" helps deter prowlers, burglars and vandals. As soon as the prowler gets within the detection radius of "The Big Switch," your lights, lamps and radio automatically switch on. Any possible wrongdoing that could easily happen in the dark is now clearly exposed!

Call your security dealer today and find out how easy it can be to put this incredible system to work for you.



Printed in Hong Kong

5-051-144-00 Rev. A